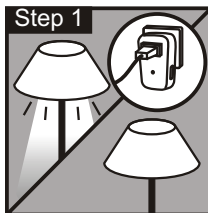


XpressZetup™ Quick Setup Guide

Step 1

Connect Z-wave device (in this example, a light module) to power supply.



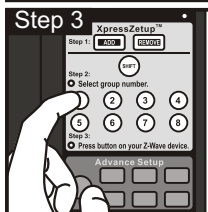
Step 2

On the backside of remote press **ADD** button.



Step 3

Press group 1. (Or any other group from 1-8 and SHIFT 1 - SHIFT 8.)



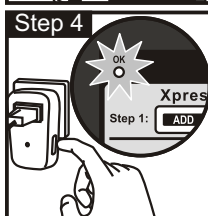
Step 4

Press the button on Z-Wave device. "OK" light should flash once. If "ERROR" light flash, the setup is not successful.

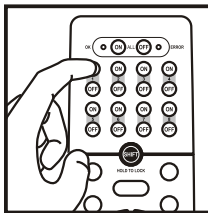


If you can not add your Z-Wave device it could be that the device was previously added to a different network.

In this case delete the device following the steps in the **DELETE DEVICE FROM NETWORK** section then add the device again.



Now you are ready to go.
On the front side you can now control your Z-Wave device.



Note:

Your Z-URC™ can also control different devices such as light plugs, dimmer plugs, thermostats, curtains and the ON/OFF function of any Z-Wave product support Basic ON/OFF Command.